

លីនាយា
សណ្ឋាគារអង្គរ


LYNNAYA

URBAN
RIVER



RESORT
&
SPA



SIEM
REAP



Date of Opening

1st February 2015

Location

One of the most centrally located hotels in Siem Reap. The Lynnaya Urban River Resort & Spa on Acha Sva Road, Street 20, Krong Siem Reap, Cambodia is a beautiful luxurious hotel in a unique setting. The Hotel offers upscale accommodation, sure to impress even the most discerning travelers. Our central location will ensure that you have the perfect base to explore this ancient city and the surrounding of Siem Reap.

Resort address

Siem Reap Kingdom of Cambodia, Acha Sva road Watbo Village, Sala Kamreouk Commune.

Contact numbers

Tel: +855 63 96 77 55

Website

www.lynnaya.com

Contacts

General Manager		gm@lynnaya.com
Sales Manager		sm@lynnaya.com
Reservation		reservation@lynnaya.com

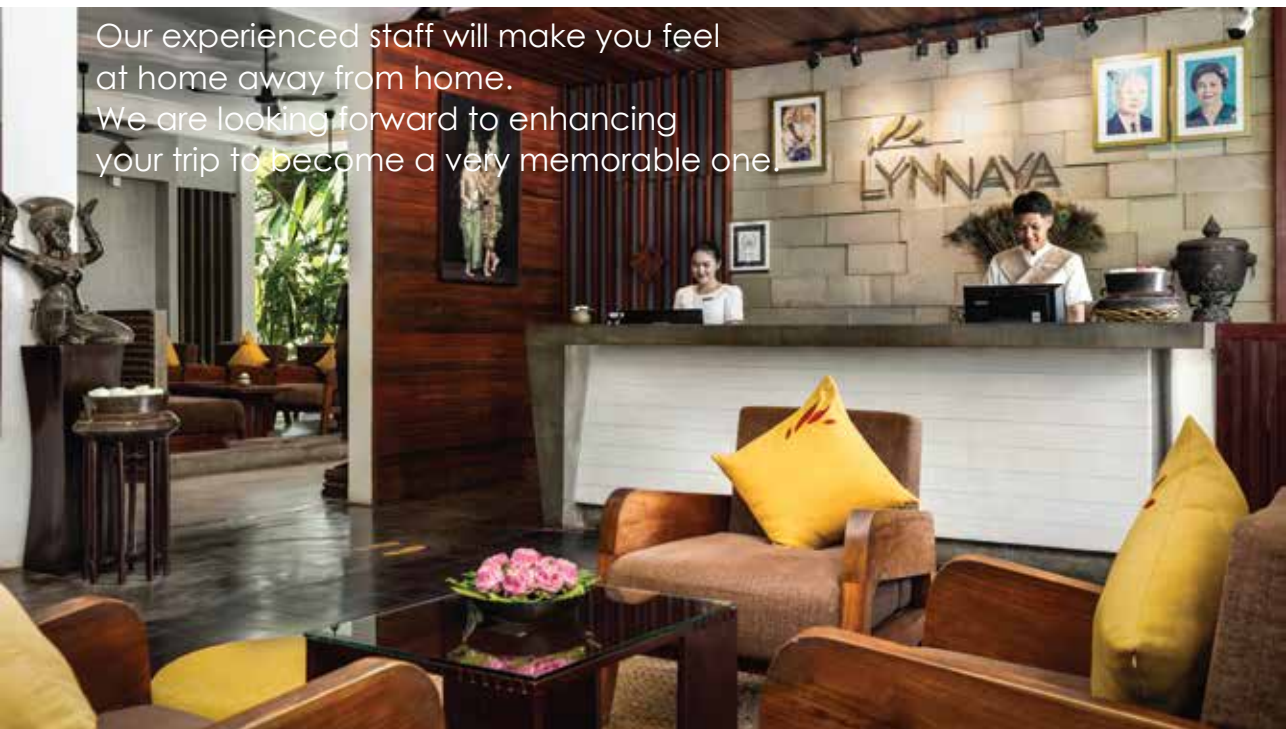


LYNNAYA URBAN RIVER RESORT & SPA

CAMBODIA'S ULTIMATE URBAN RIVER RESORT & SPA

The city of Siem Reap has resurfaced on the map of luxury destinations, as it had been a few centuries ago. Our luxury Resort is situated on the banks of the river and surrounded by lush gardens. A quiet retreat away from the hustle and bustle of downtown Siem Reap. Located only 15-minute walking distance from the Old Market and Pub Street and a 15-minute drive to the famous and Unesco World Heritage Angkor Wat temple.

Our experienced staff will make you feel at home away from home. We are looking forward to enhancing your trip to become a very memorable one.



DELUXE DOUBLE GARDEN VIEW

ROOM [14]

Awaken to serene garden vistas in our Deluxe Double rooms, nestled on the first and second floors. Khmer-inspired decor envelops a plush king bed, desk, and sitting nook or daybed, soaking up tropical views just outside your window. We seamlessly blend outdoor tranquility with modern comforts for a rejuvenating escape. Amenities include coffee/tea maker, flatscreen TV, and free high-speed WiFi. These rooms sleep up to three people with an optional extra bed at an additional cost.

DELUXE TWIN PRIVATE GARDEN

ROOM [7]

Our Deluxe Twin features two queen beds and a work desk. The private patio has open ceiling and seating amid tropical garden views. Refresh in the walk-in shower. Amenities include coffee/tea maker, flatscreen TV, and free high-speed WiFi. Khmer-style decor blends luxury comforts with serene outdoor access.

DELUXE DOUBLE BUNGALOW GARDEN VIEW

ROOM [7]

Our Deluxe Double Bungalow Garden View rooms are located on the ground floor and surrounded by lush garden. Decorated in traditional Khmer style, these rooms offer a king-size bed, a working desk, and a bathroom with a walk-in rain shower. Amenities include coffee/tea maker, flatscreen TV, and free high-speed WiFi. These rooms sleep up to three people with an optional extra bed at an additional cost.

DELUXE TWIN BUNGALOW GARDEN VIEW

ROOM [4]

Our Deluxe Twin Bungalow Garden View rooms are located on the ground floor and surrounded by lush garden. Decorated in traditional Khmer style, these rooms offer two queen-size beds, a working desk, and a bathroom with a walk-in rain shower. Amenities include coffee/tea maker, flatscreen TV, and free high-speed WiFi. These rooms sleep up to three people with an optional extra bed at an additional cost.



Accommodation

DELUXE DOUBLE BUNGALOW TERRACE

ROOM[6]

Our Deluxe Double Bungalow Terrace rooms are the pride and soul of our property. Located on the ground floor and decorated in traditional Khmer style, these rooms offer a king-size bed, a working desk, and a bathroom with a walk-in rain shower or a combination bathtub and walk-in rain shower. Amenities include coffee/tea maker, flatscreen TV, and free high-speed WiFi. The rooms are surrounded by lush gardens and offer an extra bed option at an additional cost.

JUNIOR SUITE OUTDOOR BATHTUB

ROOM[7]

Our Junior Suite provides a luxurious oasis within our resort, with private patio featuring open-air ceiling, lounge furniture, and personal outdoor tub surrounded by tropical garden views. Inside, unwind in premium king bed, utilize the spacious area, and refresh in walk-in rain shower. This blend of tranquil outdoor access and indulgent amenities creates an escape ideal for relaxation. Amenities include coffee/tea maker, flatscreen TV, and free high-speed WiFi. These rooms sleep up to three people with an optional extra bed at an additional cost.

PRESIDENTIAL SUITE

ROOM[1]

The Presidential suite is our largest suite and the ultimate experience at the Lynnaya Urban River Resort & Spa. Located on the ground floor surrounded by our lush green gardens. Khmer style decorated, the Presidential suite features a King size bed (2m x 2m), a working desk and a bathroom with walk-in rain shower and bath tub, wooden floor, day bed and sofa. Good to know the Presidential Suite has a terrace with sitting area. An extra bed can be added at additional cost in the Presidential Suite. Suitable for a family. To make you completely feel at home right away, the Presidential Suite is equipped with free coffee and tea making facilities, safe, flat screen smart cable TV, telephone, bathrobe, slippers, hairdryer, scale, free high-speed WIFI, internet connection and blue tooth sound system.



THE ART OF REST, IN COMFORT

ROOM TYPES



DELUXE DOUBLE GARDEN VIEW



DELUXE TWIN PRIVATE GARDEN



DELUXE DOUBLE BUNGALOW GARDEN VIEW



DELUXE TWIN BUNGALOW GARDEN VIEW





DELUXE DOUBLE BUNGALOW TERRACE



JUNIOR SUITE OUTDOOR BATH TUB



PRESIDENTIAL SUITE



THE ART OF RELAXATION, KHMER STYLE



POOL BAR

Open from 10: to 19:00, the Lynnaya Pool Bar is located at Lynnaya's dark-blue swimming pool where you will float weightlessly in the cool waters. Enjoy relaxing moments before visiting our Nirvana Spa and Wellness or after a long day in town or after visiting the temples. Water is the essence of the Khmer civilization. They have mastered this resource. Order a fresh fruit juice, a cocktail and light choices of food from the pool menu. Relax on the sun deck, while the sun is caressing you gently.



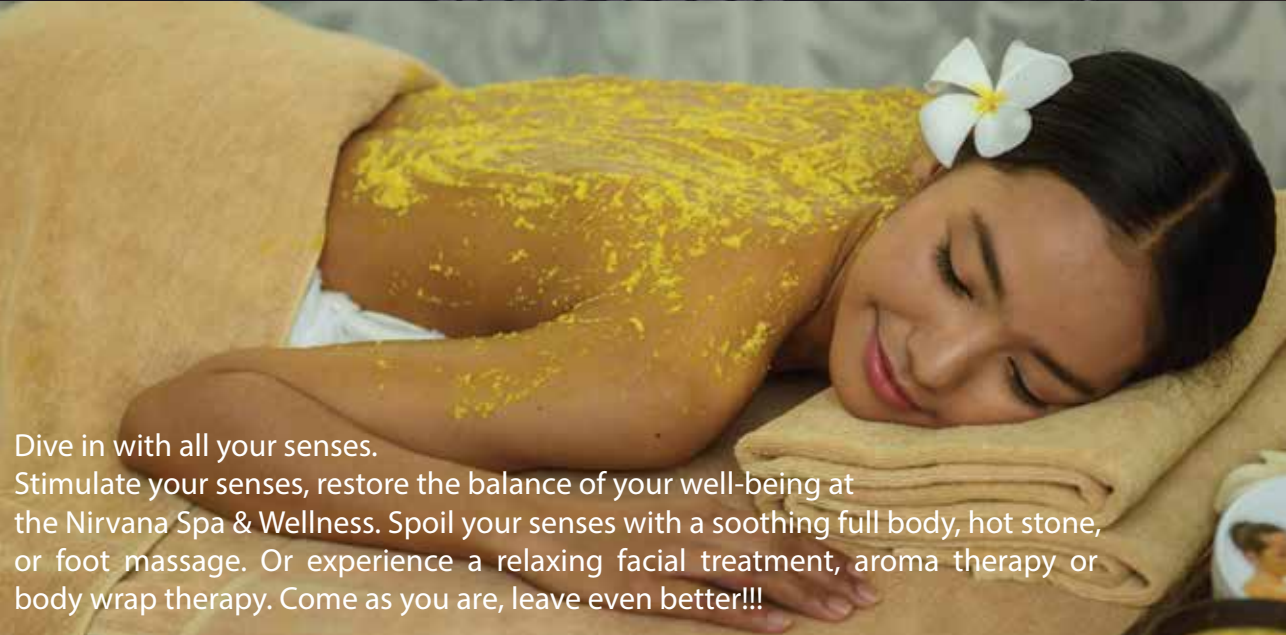
Swimming Pool



Pool Bar



 nirvana
spa & wellness



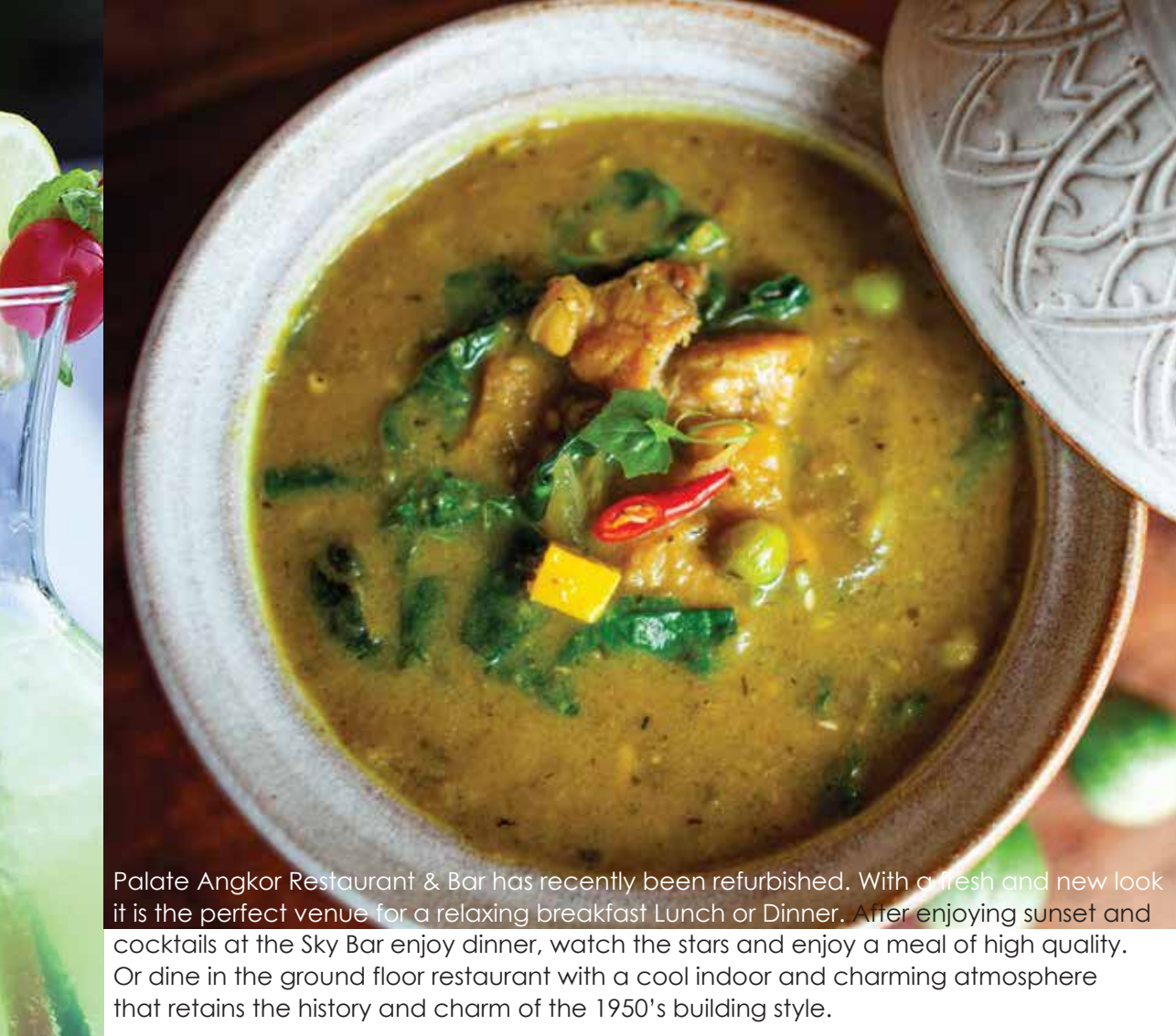
Dive in with all your senses.
Stimulate your senses, restore the balance of your well-being at
the Nirvana Spa & Wellness. Spoil your senses with a soothing full body, hot stone,
or foot massage. Or experience a relaxing facial treatment, aroma therapy or
body wrap therapy. Come as you are, leave even better!!!



Nirvana Spa & Wellness



Palate Angkor Restaurant & Bar

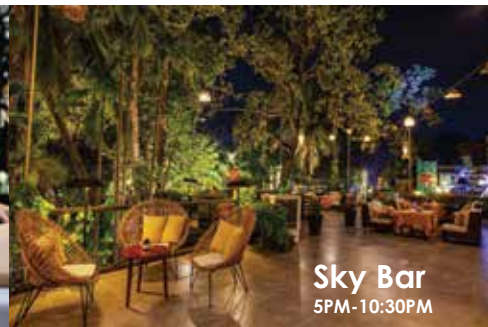


Palate Angkor Restaurant & Bar has recently been refurbished. With a fresh and new look it is the perfect venue for a relaxing breakfast Lunch or Dinner. After enjoying sunset and cocktails at the Sky Bar enjoy dinner, watch the stars and enjoy a meal of high quality. Or dine in the ground floor restaurant with a cool indoor and charming atmosphere that retains the history and charm of the 1950's building style.



RESTAURANT INFORMATION

Description	Palate Angkor Restaurant	Pool Bar	In-Room Dining
Operating Hours	06:00 - 22:30	10:00 - 19:00	07 : 00 -22 : 30
Breakfast	06:00 - 10:00		
Lunch	12:00 - 14:30		
Dinner	18:00 - 22:30		
Seating Capacity	300	30	
Main Indoor Restaurant	120		
Palate's Sky Bar	180		
Food style	Modern interpretation of Khmer food/Western/Asian	Light food snacks/drinks	Delicious food (Khmer, Asian & Western)
Air-conditioning	Indoor/open-air	open-air	√



ជាឡើយ អង្គរ
palate
Angkor - Restaurant & Bar

Friday & Saturday

Enjoy an evening accompanied by live music



Pan-Asian Cuisine

Where Authenticity Meets Creativity

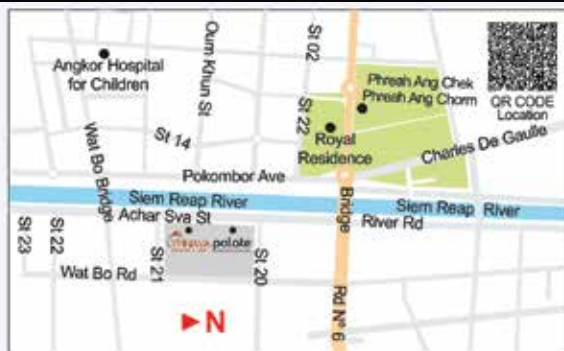
Happy Hour from 5 pm to 7 pm

Buy one get one free for all cocktails, non-alcoholic drinks

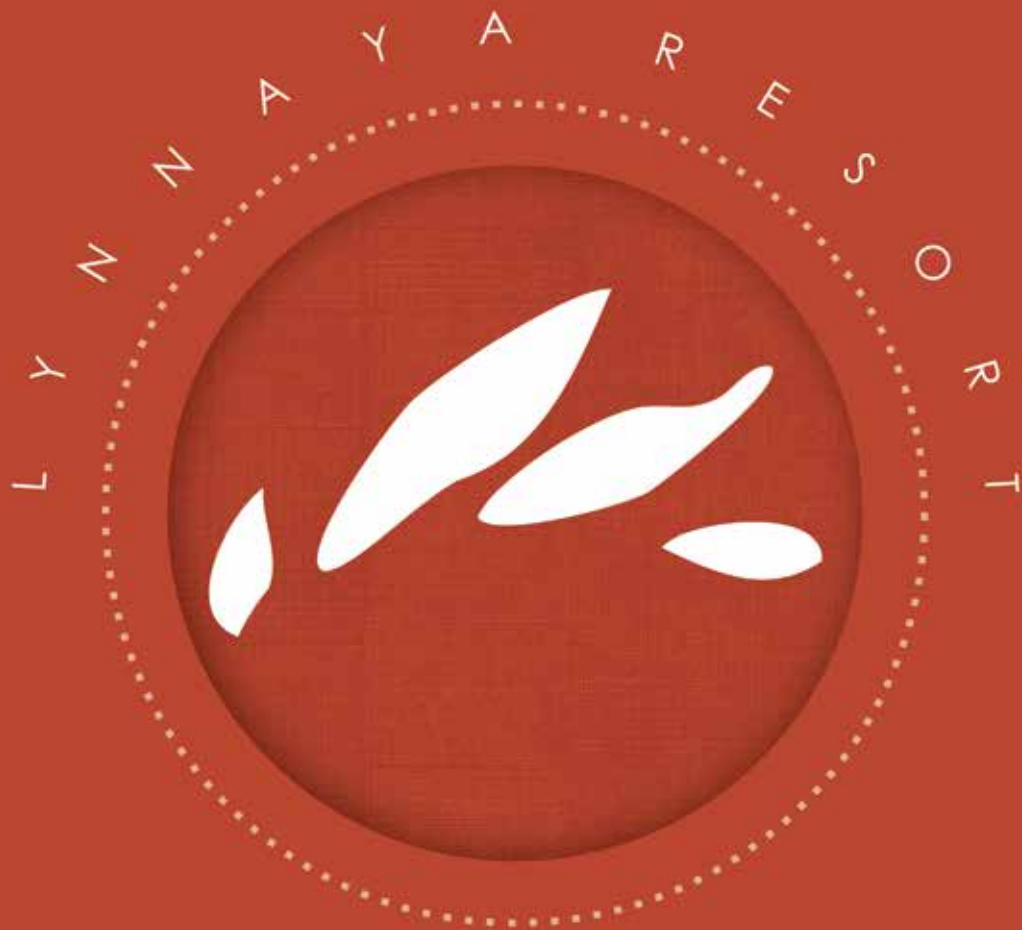
Address: Siem Reap, Kingdom of Cambodia
Acha Sva Road, Wat Bo Village, Salakormroeuk Commune

T : +855 63 967 755
H : +855 12 983 980

E : sale@palateangkor.com
W : www.palateangkor.com



OUR LOCATION



Riverside & Street 20
Siem Reap, Kingdom of Cambodia
TEL +855 63 96 77 55 | FAX +855 63 96 77 56
www.lynnaya.com | info@lynnaya.com